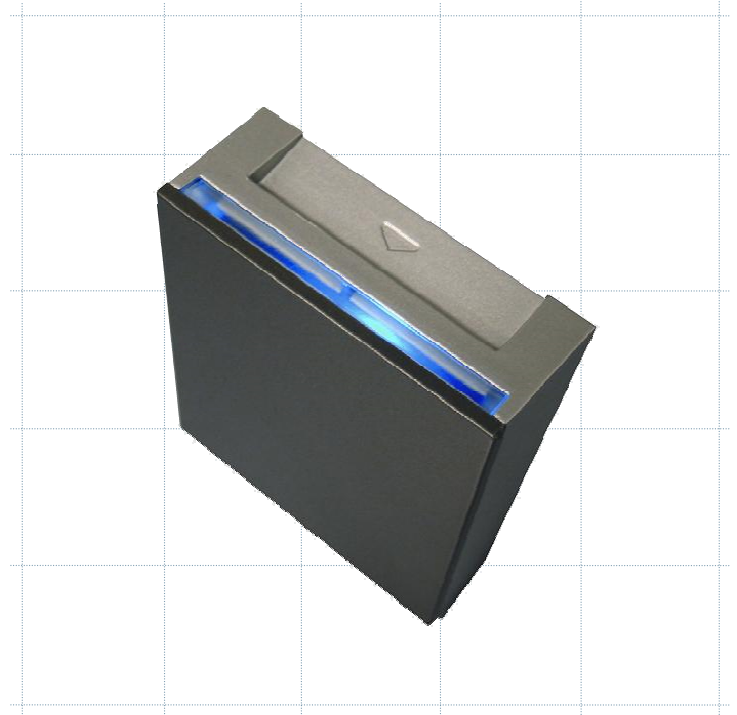




A UTC Fire & Security Company

Intellity Mag Intel Intelligent Energy Saving Device

- Allows significant reduction in power consumption (up to 65%).
- Cuts electric circuits after a 1 minute delay.
- Reads magstripe cards (track 1).
- Intelligent system which differentiates guest and master cards; activates one or two relays depending on the information read from the card.
- Attractive blue light for easy location in the dark.
- Green and red lights to indicate validity.
- Designed to be installed in a standard electrical box (square or rounded).
- No need to communicate with portable programmer.
- Works with Onity HT24W locking system.



Weight: 125gr

Dimensions: 87 x 76 x 30 mm (H x W x D)

Packing: Plastic bag

Standard colours:



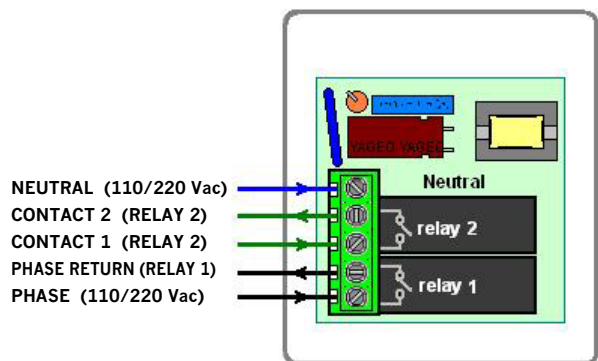
Black

Silver with
Dark Grey
front

Dark Grey
with
Silver front

White

Connections Diagram



Power Consumption: Nominal 16mA, Max. 23mA

Power Supply:

- Voltage: 110 or 230 Vac. Tolerance 10%
- Frequency: 50 – 60 Hz
- Output: 2 Relays
- Power cut-off: 12A, 250V~,cos $\varphi = 1$
8A, 250V~,cos $\varphi = 0,6$
- Incandescent Max. Load: 10A
- Halogen Max. Load: 10A

IMPORTANT: Halogen, electronic fluorescent and low consumption lamps present a very high consumption (up to 20Amp) at switch-on and switch-off time, often damaging relay contacts. If this type of lamps are being used, Onity recommends to check if the use of a contactor is needed.