



A UTC Fire & Security Company

Intellity Basic Energy Saving Device

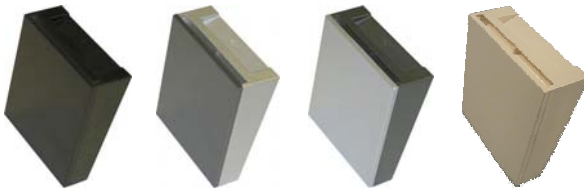
- Allows significant reduction in power consumption.
- Cuts electric circuits when removing card.
- Mechanically operated with any type of card.
- Incorporates light for easy location in the dark.
- Designed to be installed in a standard electrical box (square or rounded).
- No need to communicate with portable programmer.

Weight: 110gr

Dimensions: 87 x 76 x 30 mm (H x W x D)

Packing: Plastic bag

Standard colours:



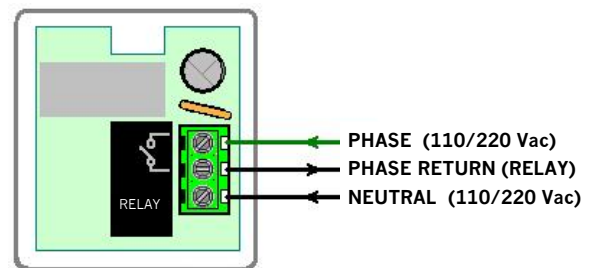
Black

Silver
with
Dark Grey
front

Dark Grey
with
Silver front

White

Connections Diagram



Power Consumption: Nominal 16mA, Max. 23mA

Power Supply:

Voltage: 110 or 230 Vac. Tolerance 10%

Frequency: 50 – 60 Hz

Output: 1 Relay

Power cut-off: 12A, 230V~,cos φ = 1

8A, 230V~,cos φ = 0,6

Incandescent Max. Load: 10A

Halogen Max. Load: 10A

IMPORTANT: Halogen, electronic fluorescent and low consumption lamps present a very high consumption (up to 20Amp) at switch-on and switch-off time, often damaging relay contacts. If this type of lamps are being used, Onity recommends to check if the use of a contactor is needed.