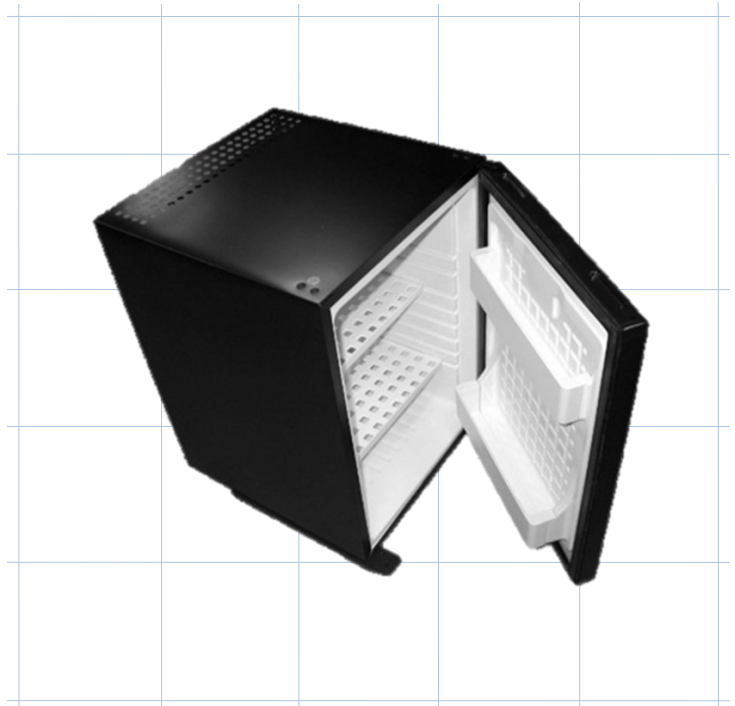


Onity presents **solutiOn 10+**, a range of silent minibars backed up by the leading company in solutions for the hospitality market.

- **Ecological:** they comply with the highest quality and environmental requirements.
- **Silent:** The absorption technology cooling system, featuring no moving parts, ensures a totally silent operation.
- **Flexibility:** The door is reversible thanks to its changeable hinges, in a quick and easy way.
- **Different sizes:** **solutiOn 10+** minibars are available in two sizes, 30 and 40L (52 and 60L also available in **solutiOn** model).
- **Options:** A range of optional features is available to personalise the product to meet customers' needs.

IMPORTANT: Ventilation

The cooling unit requires ventilation space for an optimal running of the minibar, therefore it is recommended to leave a minimum space of **6 cm** around it.



Technical Specifications

Model	30 L	40 L
Net Volume	28 Litres	36 Litres
Dimensions with Packing (H x W x D)	559 x 432 x 464 mm	604 x 432 x 484 mm
Dimensions Unpacked (H x W x D)	512 x 408 x 415 mm	557 x 408 x 454 mm
Nominal Power	60 Watt	60 Watt
Power Supply	230V / 50-60 Hz	230V / 50-60 Hz
Energy Consumption	0,96 kWh / 24h	1.05 kWh / 24h
Net Weight	11,55 Kg	12,60 Kg
Gross Weight	13,00 Kg	14,10 Kg
Thermostat Type	Mechanical	Mechanical
Temperature Settings	3	3
Temperature Interval	16 to 32 °C	16 to 32 °C
Climate Class	N	N
Internal Light	Yes (led type)	Yes (led type)
Shelves	2 white plastic trays	2 white plastic trays
Door slider for cabinet	Yes (optional)	Yes (optional)
Glass door	(only available for solutiOn model)	(only available for solutiOn model)
Other Options	Wheels, Lock, Built-In (cabinet instal.)	Wheels, Lock, Built-In (cabinet instal.)