

Onity Product Range

Discover Security & Efficiency in a World of Connectivity



Onity
 United Technologies

Real solutions  Reliable support

Onity





Company Profile

For decades we have been the world's leading manufacturer of electronic locks for hospitality, as well as other sectors such as education, corporate, government and marine. Through the years, as technologies have become intertwined, we have expanded our services and solutions and have blossomed into much more than just a lock maker.

Today, we are a leading provider of a host of facility management technologies - from electronic locks, to in-room safes, minibars, energy management and wearable systems. Today, we are recognized worldwide for our powerful combination of innovative thinking and intelligent systems.

Global Service Network

Since 1984, Onity has set the standard for electronic door locking with over 5 million e-locks installed in more than 30,000 hotels around the globe. At Onity, we are on building lasting client relationships and providing the solutions they need. Over 250 hotel chains around the world already rely on Onity for their electronic hotel solutions.

Headquartered in Salem, Oregon (USA), Onity has R&D and assembly operations in Spain, Mexico, China, and the U.S., as well as an extensive sales and service network that spans more than 115 countries around the globe. Whenever or wherever you need us, we are there to ensure that your systems perform beautifully.

Quality Products

With millions of systems installed worldwide, we are known around the globe for reliable products backed by superior support. Our products meet International standards, and are designed and built to uncompromising quality approval. From research and development to after-the-sale support, we cover all the stages to guarantee the finest quality in all our products and services.

United Technologies Corporation

Onity is part of UTC Climate, Controls & Security, the leading provider of heating, air conditioning and refrigeration systems, building controls and automation, and fire and security solutions.

UTC Climate, Controls & Security is a unit of United Technologies Corp. (NYSE: UTX), which provides high technology products and services to the building and aerospace industries worldwide.

With rich histories of technological pioneering from their world-leading business units such as Otis Elevator, Carrier and Hamilton Sundstrand, UTC brings to Onity world-class quality processes and R&D resources.



INDEX

Hospitality Solutions

Electronic Locking Systems	06
Trillium Series Electronic Locks	10
Special Locks	15
Electronic Cylinders	16
Bathroom & Passage Locks	17
Electronic Locks for Lockers	17
Other Solutions for Hospitality Applications	18
Qing Wearable Solution	19
Electronic Safes	20
Minibars	22
Energy Management	24

Commercial Solutions

Electronic Locking Systems	28
Onity Wireless On-Line Lock (OWL)	31
Off-line Series	32
Other Solutions for Commercial Applications	33
Customer Base	34

Hospitality Solutions



Electronic Locking Systems

Onity combines innovative technology and dependable service with decades of experience to provide the most advanced electronic locking solutions in the industry today. With over 5 million doors installed worldwide, Onity locks offer the quality, features and durability you need, with the added advantage of Onity's knowledge and world-renowned reputation.

Designed for Convenience

Onity electronic locks are brilliantly designed, yet ingeniously simple to use. Created to accommodate small-to-large-sized properties, Onity locks provide hotel guests with smooth and efficient check-in, which enables your property to achieve new heights of convenience and operational efficiency.

The Basics of Electronic Locking Systems

An electronic lock grants access to authorized keycards at defined times/dates and records the opening activity. This results in reduced liability, enhanced hotel security and more efficient staff management.

Onity systems consist of:

- ☐ Locks
- ☐ Cards (non proprietary)
- ☐ Encoder (keycard issuing station for the frontdesk)
- ☐ System software (optional)
- ☐ Handheld lock programmer/interrogator (for maintenance staff)

Onity off-line locks are easy to install/replace and battery operated (no expensive wiring is required). The hotel generates its own re-usable keycards, eliminating locksmith issues; in fact, the Onity system also features automatic re-keying: new guest check-in voids the former guest keycard, which is like "having a new lock" for each new guest!

Onity masterkeying software provides management flexibility, you define **who** is authorized, **where** and **when**. Staff keycards, which are electronically identified by employee name, can be limited to specific shifts or days.

Onity electronic locking systems also enhance hotel security, if a master-keycard is lost it can be cancelled electronically through the Onity software. Moreover our technology features multiple levels of encryption to maximize security and peace of mind for both you and your guests, to ensure a sound night's sleep for all.





Discover the benefits for both you and your guests of choosing an Onity electronic locking solution:

2 Lock Design Concepts



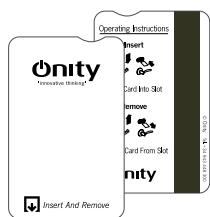
Trillium series



ADVANCE Trillium series: modular



3 Keycard Technologies



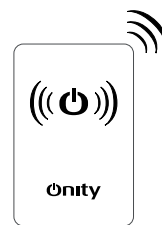
Magstripe

- Performs all functions you expect from an electronic locking system
- Re-encodable
- Very cost efficient
- Onity magstripe cards feature a dent to aid blind or visually impaired people
- Non proprietary



Smart

- One step above, higher security
- Lock's "read & write" feature allows for 2-way communication and "virtual on-line" system performance (HT28 Smart & revalidator)
- Non proprietary



Contactless RFID

- No need to insert the card in the lock, intuitive and user friendly
- High-tech touch for the property
- Multiple key formats: keycard, sticker, bracelet... Ideal for spas and beach resorts
- Non proprietary

Advanced Technologies in Contactless RFID

Following market trends in technology, Onity advanced security products include the latest RFID (Radio Frequency Identification) features, with a flexible architecture that will accommodate future developments.

With the introduction of Trillium locks Onity also brings an additional RFID technology option by implementing MIFARE® Plus technology, a required feature at certain hotel chains for which increased credential security is vital.

Onity RFID locks are compatible with the following types of opening credentials, in two different operation modes:

Classic Mode

- MIFARE Ultralight
- MIFARE Classic/EV1 1K/4K

Plus Mode

- MIFARE Ultralight C
- MIFARE Plus S 2K/4K
- MIFARE Plus X 2K/4K

New Onity RFID locks and encoders offer the capacity to switch from MIFARE Classic to Plus mode, avoiding the investment on additional equipment, should the technology changeover be required later on in time. In fact Trillium series locks

in Classic mode are compatible with standard Onity RFID encoders, therefore new design locks and previous ones can coexist in the same installation working under one same system.

Onity innovative solutions are also compatible with NFC (Near Field Communication) and BTLE (Bluetooth Low Energy) technologies, enabling contactless communication based on mobile phones; this allows hotel guests to securely download their key to their smartphone, providing an exceptional guest experience and integration with hotel loyalty apps.

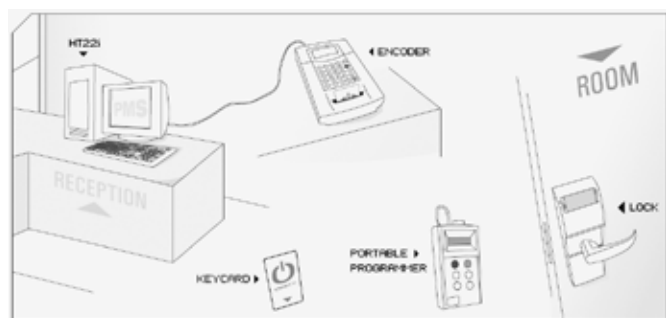
Electronic Locking Systems

3 Frontdesk Systems (software & keycard encoding)*

HT22i System

For magstripe and/or contactless keycards

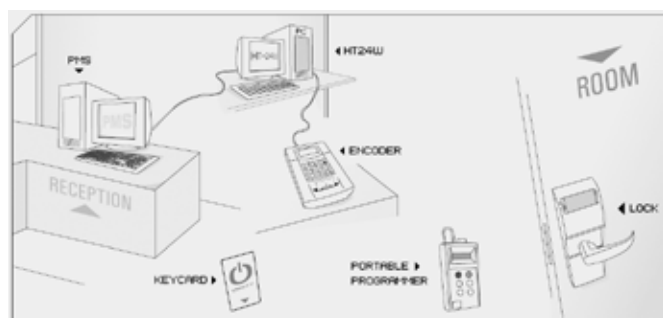
- Designed for small to medium-size properties
- No need for a PC
- Powerful but easy to use
- All the features you expect from an electronic locking system within a compact encoding unit
- PMS interface option
- Smooth and efficient check-in; with the Onity manual insertion encoder's unique insertion technology, errors caused by improper encoding are reduced to virtually zero



HT24W System

For magstripe and/or contactless keycards

- Fully featured system for any property size, the most advanced system based on magstripe and contactless technologies
- PC-based and Windows® compatible
- Brilliantly designed, yet ingeniously easy to use
- Virtually unlimited number of front-desk card issuing stations
- PMS and POS interfaces



HT28 Smart System

With dual technology locks which accept both magstripe and smart keycards

- All the benefits of HT24W plus virtually "on-line" performance thanks to the Onity revalidator
- Smart keycards can be used for staff only, while guests use inexpensive magstripe ones
- Enhances overall security and improves staff and operations management

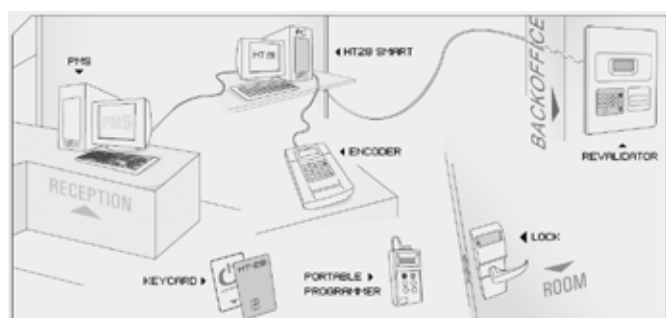


The Onity revalidator

90% of the power and efficiency of an on-line system at a fraction of the cost.

Enjoy the benefits of two-way communication between the locks and your main computer system with 99% fewer wires than in traditional on-line systems.

Staff keycards automatically carry important activity and lock status information back to the PC.



*All Onity frontdesk systems are modular and upgradeable. They offer the capability to control a full range of Onity options: in-room safes, on-line and off-line wall readers, energy management systems, etc.



Encoding Stations



- ❑ Innovative touch-screen with quick action buttons
- ❑ "Hot swap" modular encoding deck (insertion, motorized or dual mag-RFID)
- ❑ TCP/IP connectivity
- ❑ Web-based technical support capability
- ❑ USB/SD card memory backup and USB printer support

Standard Encoders

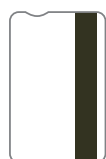
(example shown: RFID MIFARE)



Wall Readers

On-line or off-line configurations.
For a wide range of applications
such as:

- ❑ Elevators
- ❑ Parking areas
- ❑ Electric gates
- ❑ Swimming pools
- ❑ Back office



Magstripe



Smart



Contactless



*Wireless on-line electronic locking solution also available, see O'S Onity On-Line System in pages 30-31

Electronic Locks

The demanding hospitality industry landscape is changing quickly; as a trusted leader in proven, reliable electronic locking solutions, Onity is at the forefront of the evolution in security and access control.

Onity already changed the hospitality security design and technology concepts with the launch of *ADVANCE*, a revolutionary new locking solution featuring a unique two-piece modular design. With attractive options, it allows hotels to seamlessly blend their guest room door locks into any type of décor.

Research

Developed through years of careful research & development that includes detailed scientific data, as well as feedback from a broad spectrum of hoteliers, guests and design professionals, new Onity locks build upon the proven reliability and convenience of previous generation ones.

In fact with *ADVANCE* Onity took a step beyond, testing various reader alternatives that would increase the rate of correct first time keycard insertion. As a result, Onity developed the "Groove & Arrow" concept, which makes keycard insertion naturally intuitive.



Advanced, Reliable and Built for the Future: Trillium™

Trillium is a stylish and technologically advanced new lock series which features a sleek fresh design to complement modern hotel aesthetics.

You can choose Onity for a new project, or easily replace existing Onity locks with Trillium series ones for an updated look and enhanced security; Trillium locks provide an easy upgrade path for properties with Onity locks currently installed, by using the existing footprint and door prep.

Superior Security

The Trillium lock series offers enhanced credential security as well as superior security options. It is available in three primary versions:

1. Magstripe or RFID lock.
2. RFID lock with MIFARE Plus® technology option, which provides an enhanced security protocol for RFID locks.
3. RFID lock with DirectKey™ ready module option.

Getting a Lock On Quality Standards

Continuing our commitment to maintain the highest standards for quality and security, Trillium and *ADVANCE* locks are compliant, among others, with CE EN14846, DIN and BHMA standards (the Builders Hardware Manufacturers Association/American National Standard Institute -ANSI- A156.25 grade 1 standard for electrified locking devices).



*For EURO 5470H and 5480H mortises (for *ADVANCE* 5470H only)



ADVANCE Trillium RFID

Electronic Locks

Onity locks are available with 3 reading technologies:



Magstripe Lock Reader

- ☐ Stand-alone (no wiring required)
- ☐ Works with standard ISO/ABA magstripe cards
- ☐ Compatible with BTLE (Bluetooth Low Energy) technology
- ☐ Lock ensures accuracy by reading the card twice, at insertion and at removal
- ☐ Non-volatile memory records the last 500 openings including date, time and card used
- ☐ Each new guest card overrides any previous ones, preventing re-entry
- ☐ Programmable for the "office-mode" function (free passage)
- ☐ LED lights to indicate lock status, including a low battery warning without disturbing guests
- ☐ Powered by 4 standard AA batteries
- ☐ Corrosion resistant case

Dual Mag-Smart Lock Reader

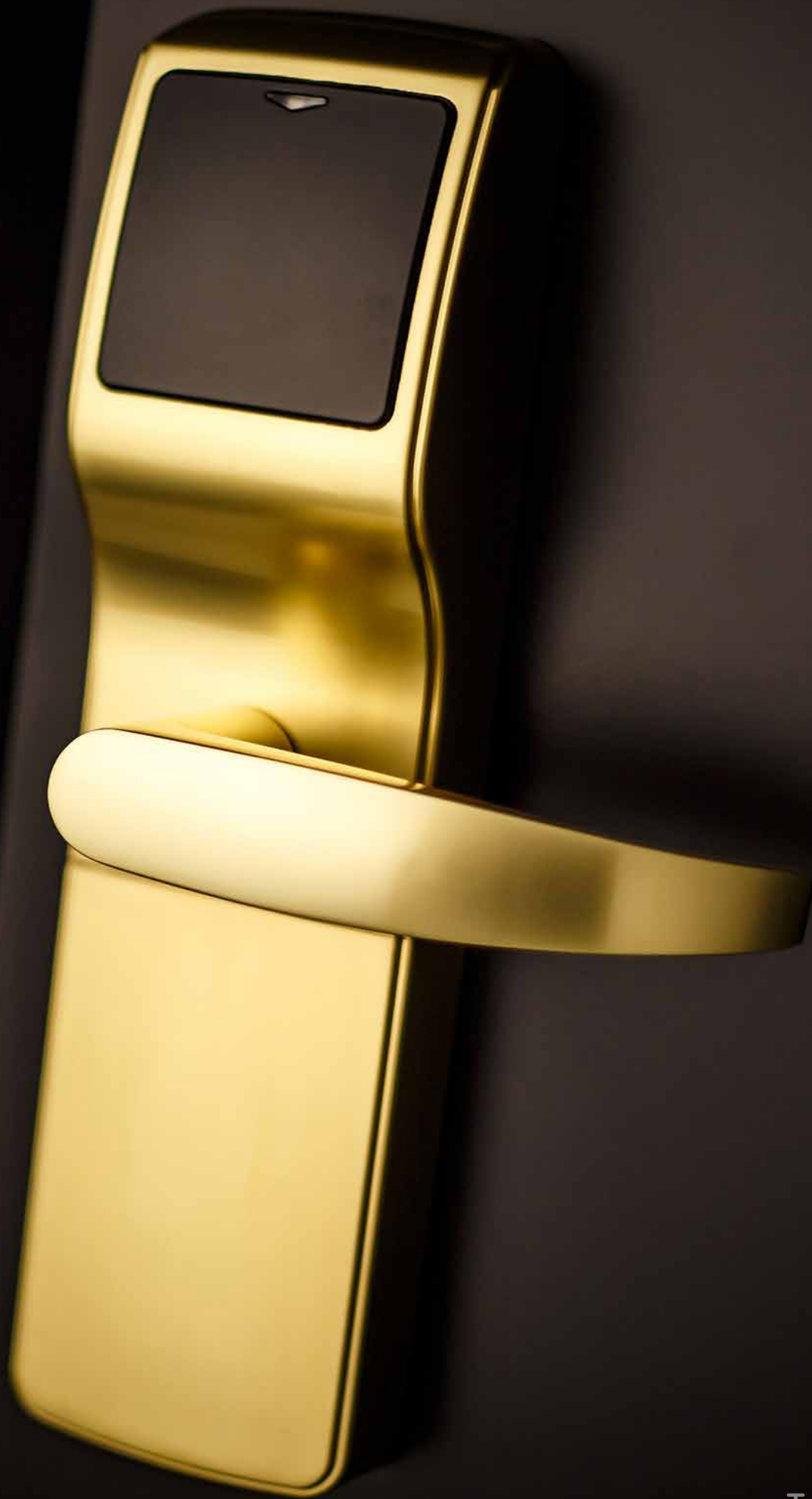
- ☐ Stand-alone (no wiring required)
- ☐ Multi-technology reader using ISO/ABA magstripe cards, memory-chip cards and/or microprocessor smart cards
- ☐ Compatible with BTLE (Bluetooth Low Energy) technology
- ☐ Lock ensures accuracy by reading the magstripe card twice, at insertion and at removal
- ☐ Non-volatile memory records the last 500 openings including date, time and card used
- ☐ Each new guest card overrides any previous ones, preventing re-entry
- ☐ Programmable for the "office-mode" function (free passage)
- ☐ LED lights to indicate lock status, including a low battery warning without disturbing guests
- ☐ Powered by 4 standard AA batteries
- ☐ Corrosion resistant case

RFID Lock Reader

- ☐ Stand-alone (no wiring required)
- ☐ Uses next generation proximity technology, no insertion required
- ☐ Works with MIFARE® Classic/EV1, Plus, Ultralight and Ultralight C technologies
- ☐ Compatible with BTLE (Bluetooth Low Energy) and NFC (Near Field Communication) technologies
- ☐ Wide range of opening devices
- ☐ Supports multi-application
- ☐ Non-volatile memory records the last 500 openings including date, time and card used
- ☐ Each new guest card overrides any previous ones, preventing re-entry
- ☐ Programmable for the "office-mode" function (free passage)
- ☐ LED lights to indicate lock status, including a low battery warning without disturbing guests
- ☐ Powered by 4 standard AA batteries
- ☐ Corrosion resistant case



*For EURO 5470H and 5480H mortises (for ADVANCE 5470H only)



Trillium RFID

Electronic Locks

Lock Options

A wide selection of attractive finishes, interchangeable handle styles, and cover plates allow hotels to seamlessly blend the locks into the overall aesthetic design of the property.

Finishes

Complement the elegance of your **Onity** lock with any of these wear-resistant finishes:



Satin chrome*



Polished chrome



Satin brass



Polished brass



Antique brass



Satin nickel



Dark bronze

***Standard**

Handles

Choose the perfect handle to reflect the design style of your property:



Granada



Wing



Barcelona



Jerez



Toledo



Sevilla

Compatible with Trillium Mag & Trillium RFID

Latches/Mortises

Options include extra-long high security deadbolt, security deadlatch, privacy and anti-panic functions:



EURO*
with auto latch



DIN
with auto deadbolt



ANSI



ANSI
with auto deadbolt



Tubular



Interconnected



Sliding



Panic bars

Compatible with Trillium Mag & Trillium RFID

Special Handles

In answer to today's increasing design conscious hotel requirements, Onity has partnered with HOPPE Group, a leading hardware producer, to offer a range of handles which combines an aesthetically pleasing look with top of the range quality and durability. They are available in stainless steel finish, with EURO, Tubular, Interconnected and Panic Bar mortises.

Compatible with Trillium Mag and Trillium RFID lock models.



Amsterdam



Bonn



Dallas



Paris



Trondheim

Cover Plates

Onity offers a selection of attractive cover plates that are ideal for retrofit projects.





Special Locks



Outdoors Lock

Onity locks are available in a special version for outdoors, designed to withstand extreme weather environments. This solution is offered for Trillium Mag and Trillium RFID locks in satin chrome and dark bronze finishes, combined with the full range of Onity handles.



Glass Door Lock

The Onity glass door solution is ideal for main entrance, office, meeting or passage doors, for virtually any type of property. It has been designed especially to fit the Onity Trillium series electronic lock range on glass doors, and it is also suitable for other types of doors with thickness under 25 mm (metallic, hard wood, lockers, etc.)



Sliding Door Lock

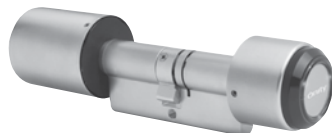
Onity electronic locks are suitable for installation on sliding doors, using a specially designed mortise lock. This solution is applicable to Trillium Mag and Trillium RFID series locks.



Electronic Lock with Panic Bar

Onity electronic locks can be combined with a panic bar solution at emergency exits, for higher security and control. Manufactured in high quality materials and using simple mechanisms, they guarantee efficiency and long life.

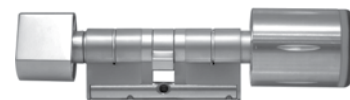
Electronic Cylinders



e-Cylinder



e-CylinderMAX (IP67)



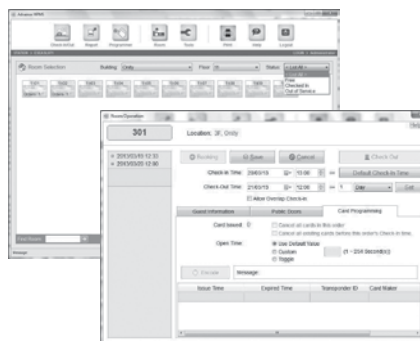
e-Cylinder AutoMAX (IP67)

The Onity RFID electronic cylinder is the ideal locking solution for guestroom and staff doors at small to medium size hotels. Smart but simple, it provides convenience and high security using MIFARE® technology. Its installation is extremely quick and easy for refurbishment projects, as it **only requires changing the mechanical lock** for the electronic cylinder, with no other door modifications.

Features

- ☐ User friendly
- ☐ EURO mortise profile
- ☐ Works with MIFARE® (Classic/EV1) 1K or 4K RFID cards and tags
- ☐ Standard or MAX (for outdoors, IP67) e-cylinder models, with half or double cylinder options
- ☐ Software based system, up to 1.500 doors and 12.000 users
- ☐ Non volatile memory records the last 1,000 events
- ☐ Capability to write events onto the card
- ☐ Special auto-programmable card based model, AutoMAX
- ☐ Fire rated (30/60 minutes)
- ☐ Free passage mode
- ☐ Advanced encryption for high security

- ☐ Smart sleep mode for energy saving
- ☐ Acoustic low battery warning
- ☐ Different finishes, sizes and handles available



HOPPE®
Handle of excellence.



Handles and Knobs

Hotels can obtain a comprehensive door solution from Onity, including handle and knob sets which will also match their decoration, no matter the style.

These handles feature the SecuSan® antimicrobial option, providing active protection against germs.



Amsterdam



Bonn



Dallas



Paris



Trondheim

Wall Readers



Off-line configuration.

For a wide range of applications such as:

- ☐ Elevators
- ☐ Parking areas
- ☐ Electric gates
- ☐ Swimming pools
- ☐ Back office

Bathroom and Passage Locks



Easy to install, they are the ideal complement for Onity electronic locks, sharing the same handle models and finishes.

The bathroom lock features a convenient push-only privacy button and panic function, providing ease of use and security for the guest.



Finishes



Satin chrome



Polished chrome



Satin brass



Polished brass



Antique brass

Handles



Granada



Wing



Barcelona



Jerez



Toledo



Sevilla

Electronic Locks for Lockers



OniLocker RFID Contactless Electronic Lock

OniLocker provides high security and convenience using contactless carriers (cards, wristbands, etc.). Working with RFID MIFARE® (Classic/EV1) technology, it enables to lock/unlock lockers by approaching the carrier to the reader. An ideal solution for:

- ☐ Spa & Wellness centres
- ☐ Golf clubs
- ☐ Ski resorts
- ☐ Sports complexes

Complete system with management software and card/tag encoder (basic version also available for small installations).

Features

- ☐ Autonomous lock, no wiring
- ☐ Can be installed on wooden and metallic doors
- ☐ User and master card management
- ☐ Master cards to lock/unlock any of the lockers
- ☐ Compatible with Onity RFID electronic lock range and Intellity energy savers

- ☐ Optional InfoTerminal available which offers the user details about their opening device, through a screen. It shows the locker number assigned to the opening device approached to it, or if it is a master





Hospitality

Other Solutions for Hospitality applications

Wearable Payment and Access Management System

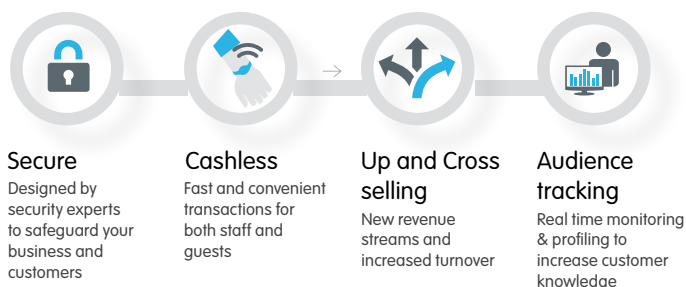
Increase revenue and customer loyalty!

Qing is the first RFID/NFC technology based wearable payment and access management system for hotels, resorts and cruiseships, designed to enhance the guest experience and to boost hotel results.

Qing enables to offer thrilling personalized service packs, generating new revenue models and providing guest profiling for increased satisfaction and loyalty.

Qing prevents fraud and provides security and comfort for payments and entry. This is possible thanks to the use of smart bracelets, a single device which centralizes all the guest will require in terms of payments and access; the only thing they need to carry, even to open the room door.

The Qing cashless RFID system offers an array of benefits both for management and guests:



Electronic In-Room Safes



OS100

Digital Keypad Safe for Any Budget

Safes have become an expected amenity for many travelers today. OS100 is an economical but functional safe making it cost effective for properties to provide this important offering to their guests, protecting their valuables. OS100 includes many key features such as audit trail, mechanical key override and an optional rental stick.



OS100*

	SIZE (external)	VOLUME	WEIGHT	COLOR
LAPTOP	H 200 mm W 420 mm D 370 mm	22,7 Lts	12,7 kgs	Black (standard) Ivory (optional)

*Depth indicates box dimensions, keypad is not included.

OS200

Digital Keypad Safe

OS200 is a fully featured Onity electronic in-room safe. Its user-friendly operation coupled with high functionality makes it an ideal safe for any application. It includes optional power outlet and a rental module with software, which also offers hotel management the convenience of printing the audit trail on paper in addition to seeing it on-screen.



OS200*

	SIZE (external)	VOLUME	WEIGHT	COLOR
MINI	H 250 mm W 350 mm D 250 mm	15,29 Lts	10 kgs	Black (standard) Ivory (optional)
LAPTOP	H 200 mm W 420 mm D 369 mm	21,4 Lts	12,7 kgs	
LAPTOP 17"	H 204 mm W 508 mm D 372 mm	31,19 Lts	16,5 kgs	

*Depth indicates box dimensions, keypad is not included.



OS500

Enhanced Design Digital Keypad Safe

OS500 is the ideal safe for design-conscious hotels who also seek maximized security and convenience for guests and staff; it is a fully featured safe which combines the popular advantages in Onity safes with a sophisticated sleek design. OS500 series safes record the last 1000 operations, and they are available with interior light and electronic rental mode option.



OS500

	SIZE (external)	VOLUME	WEIGHT	COLOR
LAPTOP	H 190 mm W 435 mm D 370 mm	32,5 Lts	16 kgs	Black (standard)
BUSINESS	H 190 mm W 435 mm D 470 mm	37,8 Lts	18 kgs	Ivory (optional)

OS600

Guest Keycard Interface & Keypad Safe

This easy to operate model uses a 4-digit code in combination with the room keycard and advanced security through a "Non-resident master code" and audit trail. The OS600 safe seamlessly interfaces with any Onity magstripe locking system; it features enhanced rental mode through keycard usage, and optional PMS interface.



OS600*

	SIZE (external)	VOLUME	WEIGHT	COLOR
MINI	H 204 mm W 424 mm D 220 mm	18,15 Lts	12 kgs	Ivory (standard) Black (optional)
LAPTOP	H 204 mm W 424 mm D 370 mm	31,08 Lts	15,5 kgs	
BUSINESS	H 204 mm W 424 mm D 460 mm	38,64 Lts	17 kgs	
SUITE	H 570 mm W 424 mm D 390 mm	81,5 Lts	30 kgs	

*Depth indicates box dimensions, card reader is not included.

Hospitality

Minibars

solutiOn



The Onity hospitality solutions range incorporates a series of user-friendly and silent minibars.



Adjustable door shelves



Integrated door opening holder



Reversible reinforced door hinges



Interior light



Glass door (optional)



Lock (optional)



Wheels (optional)

Onity Quality and Service

Onity minibars are backed by the leading provider of solutions for the hospitality market, with products in around 5 million rooms and 30,000 hotels throughout the world. All components for Onity minibars are sourced in Europe, following the highest quality standards.

Flexibility

- ☐ Reversible door
- ☐ 2 sliding shelves (5 or 8 possible positions depending on the model)
- ☐ 2 adjustable racks for bottles and snacks

Economical

- ☐ Low energy consumption
- ☐ Thermal isolation through cyclopentane

Silent Running

The absorption technology cooling system ensures a totally silent operation.

Options

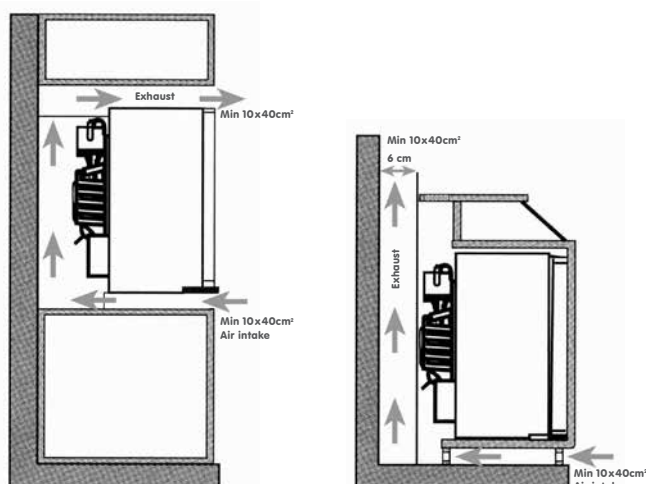
- ☐ Glass door
- ☐ Lock
- ☐ Wheels
- ☐ Sliding hinge for cabinet door



Quality and Environmental Certificates

Manufactured under ISO standards, Onity minibars comply with the highest quality and environmental requirements, including TÜV, TUC GS, CE, ROHS, GOST and ISO9001.

CFC, HCFC, HFC and PFC free, the elements the minibar uses for cooling are all 100% environmentally friendly.



The Importance of Ventilation Essential for a Correct Performance

Minibars can be easily integrated into any type of furniture, as long as the appropriate ventilation space is allowed.

A minimum space of 400cm² is recommended to enable air circulation around the cooling unit.

Technical Specifications

Solution10+ model (standard)		
Volume	30 Lts	40 Lts
Dimensions (H x W x D)*	512 x 408 x 415	557 x 408 x 454
Energy consumption	0,96 kWh/24h	1,05 kWh/24h
Temperature settings	3	
Options	Wheels, lock, sliding hinge	



Solution model (special)				
Volume	30 Lts	40 Lts	52 Lts	60 Lts
Dimensions (H x W x D)*	512 x 419 x 423	566 x 441 x 457	610 x 441 x 457	566 x 477 x 522
Energy consumption	0,70 kWh/24h	0,72 kWh/24h	0,73 kWh/24h	0,73 kWh/24h
1,5 L bottle holder	No	Yes		
Temperature settings	3			
Options	Glass door, wheels, lock, sliding hinge			

*Dimensions in mm



Minibars have the advantage of generating incremental revenue for the hotel whilst providing a service to the guest.

Energy Management



Smart energy management will improve both your bottom line and your guests' comfort

Onity presents our feature rich line of products with innovative designs and unsurpassed performance.

With models for every application, they provide substantial savings and rapid return on investment, without compromising comfort.

Energy saving devices

OniSwitch Range

OniSwitch Basic	Mechanical operation
OniSwitch Mag T3	Detects data in track 3 of magstripe cards
OniSwitch Mag Intel	Reads magstripe cards and activates accordingly
OniSwitch RFID	Detects RFID MIFARE® technology cards
OniSwitch C^{less}	Detects RFID MIFARE®, SR176 and SR512 technology cards

- ☐ Energy saving device which activates lights upon keycard insertion
- ☐ Intelligent version available (OniSwitch Mag Intel) which differentiates guest and master cards; activates one or two relays depending on the information read from the magstripe (i.e. lights for all valid cards and TV only for guests)
- ☐ Timed courtesy light; cuts electric circuits with a delay after removing the card
- ☐ LED lights for easy location in the dark
- ☐ No need to communicate with portable programmer
- ☐ Wall surface installation





Energy saving devices Intellity Range

Intellity Basic	Mechanical operation
Intellity Mag Intel	Reads magstripe cards and activates accordingly
Intellity Dual Intel	Same as mag and also detects smart cards
Intellity RFID	Detects RFID MIFARE® cards
Intellity RFID Intel	Reads RFID MIFARE® cards and activates accordingly

- ☐ Intelligent energy saving device which differentiates guest and master cards*
- ☐ Activates one or two relays depending on the information read from the card (i.e. lights for all valid cards and TV only for guests)*
- ☐ Timed courtesy light; cuts electric circuits with a delay after removing the card
- ☐ Attractive light for easy location in the dark
- ☐ No need to communicate with portable programmer
- ☐ Installation in standard electrical box

*Not applicable to Intellity Basic and Intellity RFID



Onity systems offer you **significant energy savings** while protecting the **environment**



Commercial Solutions



Electronic Locking Systems



The New Key to Flexible Access Management

An access management system must allow freedom of movement to authorized personnel while barring entry to others, in a cost-effective way. Onity solutions offer you the answer to managing your keying system without hassle, at an affordable cost. Lost keys and master keys will no longer be a problem once you have an Onity management system.

Onity locks and devices are stand-alone, providing a full range of features without the need for expensive wiring. They can also be integrated into on-line systems, in fact Onity solutions provide the ability to integrate off-line and on-line devices to meet your specific needs.

Onity systems can secure a single door or an entire network of buildings; they have been installed in such diverse areas as universities, hospitals, residential buildings, offices and many others.



Simplify your
key management!

Advantages

Cost Savings

Purchasing new cylinders and changing the master key system because a key or master key is lost, adds up quickly. With Onity electronic locking systems you will never need to do this again.

Increased Security

A facility with electronic locks results in protected information and assets as well as safer people, generating increased efficiency. Just point and click, and you decide who can go where and when.

Better Service

Use the advantages of multi-application and offer additional services in a more convenient way. All users need to carry is one keycard!

Better Key Management

Managing thousands of keys and master keys that access different doors in different buildings is complicated. Add in lost, copied and stolen keys, and it's impossible. Onity takes out the hassles of managing your keying system.

True Enhanced Image

When customers and visitors see Onity electronic locks on your doors, it makes an indelible impression about the quality of security and customer care found throughout your facility.

Profit Center

Take advantage of the new profit generating tools you are able to integrate into the system, such as vending machines, copying services, Internet access etc.

Applications



Education

A campus with electronic locks on its doors says that it cares enough to take security to a high level.

Onity systems in student accommodation areas and dormitories provide the peace of mind they need, so that they can stop worrying about their personal security and robberies.

In addition, thanks to the advantages of multi-application, you can offer additional services to your students, improving your bottom line and enhancing the campus' image.



Corporate

Onity electronic locking systems make life easier for employees and facility managers, creating a modern and efficient atmosphere, improving the key management and saving money.

Transform the image of your company to that of a professional and trustable corporation, using an Onity access management system.



Healthcare

A facility in the health environment can have hundreds or even thousands of doors that open to patients' or residents' rooms, administration offices, pharmacies and labs.

They are accessed by different people at different times, and a high level of security is required for the confidential documents, drugs and expensive equipment kept in them.

Onity systems offer you the solution for an efficient operation, with an increased level of security while vastly improving key management.



Elderly Housing

Whether your residents want privacy and the security that a locked door means, or doors need to remain unlocked for easy assistance and care, Onity locking systems are the solution for elderly housing.

Offer residents the convenience they expect through the use of a lightweight keycard. You will no longer need to worry about lost keys and forgetful users, issuing a new keycard will be easy and efficiently solve the problem offering everybody convenience and peace of mind.



Residential Buildings

With electronic locks installed in their apartments, Onity can offer convenience and, at the same time, security for their inhabitants.

You will no longer need to worry about lost keys, in addition you can have 'temporary' keys available for visitors and guests. No doubt electronic locks will be the future key for residential buildings.

Electronic Locks

Onity access management systems are designed to offer flexibility and control at an affordable cost.

On-Line Solution

OⁿS Onity On-Line System*

Onity has taken a step beyond in RFID technology developing a new wireless on-line solution which avoids expensive wiring: the new OⁿS platform, combined with OWL (Onity Wireless Lock), enables to control the property's security, manage access and obtain real-time information from the locks, without walking to a single door.

The system reports events in real time and it offers the capability to manage locking plans, without having to wire or reprogram the locks. Onity's OⁿS advanced system increases the security level of the installation while improving efficiency drastically; authorizations can be managed in real time and should the power or network connection fail, it continues to perform as the lock also holds the access information.

The OⁿS solution has been designed with future technologies in mind to continue offering the highest performance as technologies evolve.



Off-Line Solutions

Onity EntryFlex System

The EntryFlex software package is the ideal electronic locking system for facilities which require a basic solution for their mechanical master keying needs. With an audit trail of the last 500 transactions in the locks, EntryFlex manages up to 10,000 doors and 500 different masters.

Enjoy the advantages of a virtually on-line system with 99% fewer wires than traditional hard wired systems and at a fraction of the cost.



Onity dual locks feature a multi-technology reader enabling them to work with magnetic stripe and smart cards. EntryFlex combines the read/write capabilities in smart cards with the Onity Revalidator to achieve two-way communication between the stand alone locks and your main computer system.

Onity Integra3 System

This comprehensive but easy to use system offers the advantage of combining stand alone and on-line devices, within a single integrated system.

Through Integra3 facility managers can control from one to 65,000 doors and 65,000 users, with up to 3,000 users per stand-alone lock, without requiring a single metal key.

Integra3 supports both magnetic-stripe and Smart technologies. This flexible solution can work together with other systems such as proximity readers, CCTV, alarms and presence controls. The Windows® based easy to use software can be custom designed to meet specific needs.

***OⁿS Hotel version also available for hospitality applications**



On-Line Series: Onity Wireless Lock **OWL**



The Onity wireless lock provides an integrated cost-effective method of securing facility locations which were once previously cost prohibitive. Having the controller technology built into the lock offers an inexpensive solution to door wiring network infrastructure. The OWL lock can save customers up to 70% compared to some wired access systems.

Available in both wireless and off-line solutions, OWL provides local decision making at the lock for up to 5,000 keycards, employing stand-alone power and an intelligent onboard database. The lock continues to operate even when power or network connectivity is lost.

The OWL lock is currently available with MIFARE Classic/EV1 and HID iClass reader types, and it is NFC compatible. It features a modular design, allowing for upgrades to be performed in field; it can also be easily upgraded from off-line to wireless on-line with minimal lock modification.

Thanks to wireless communication, users have the ability to make updates without physical contact to the lock, as well as to receive reports on critical events in real-time.



Options for Onity Wireless Lock

A wide selection of attractive finishes, interchangeable handle styles, and cover plates allow to seamlessly blend the locks into the overall aesthetic design of the property.

Finishes

Complement the elegance of your Onity lock with any of these wear resistant finishes:



Satin chrome*



Polished chrome



Satin brass



Polished brass



Antique brass

*Standard

Handles

Choose the perfect handle to reflect the design style of your property:



Wing*



Granada



Barcelona



Jerez



Toledo

Latch Mechanisms

Onity offers a wide range of latch mechanisms to suit the needs of any property:



EURO*
with Auto Latch



ANSI



Cylindrical - BLA

Cover Plates

Onity offers a selection of attractive coverplates that are ideal for retrofit projects.



*For EURO 5470H mortise



Off-line Series



Standard duty lock



Heavy duty lock



Wall readers



- ☐ With or without keypad
- ☐ Off-line installation (no wiring required)
- ☐ Up to 3,000 users per door
- ☐ Magstripe or dual (mag+smart chip) technology
- ☐ Works with high and low coercivity standard magstripe and/or memory and microprocessor smart cards
- ☐ Audit trail memory: records up to the last 1,200 events
- ☐ Lock ensures accuracy by reading the mag card twice - once during insertion and once during removal
- ☐ Green and red LEDs to indicate lock status
- ☐ Panic function
- ☐ Powered by 4 standard AA batteries

Options for Off-line Series

Finishes

Complement the elegance of your Onity lock with any of these wear resistant finishes:



Satin chrome*



Polished chrome



Satin brass



Polished brass



Antique brass

*Standard

Handles

Choose the perfect handle to reflect the design style of your property:



Granada*



Jerez



Toledo

Cover Plates



Onity offers a selection of attractive cover plates that are ideal for retrofit projects.

Latch Mechanisms

Options include extra-long high security deadbolt, security deadlatch, privacy and anti-panic functions:

EURO*
with auto latchDIN
with auto deadbolt

ANSI

ANSI
with auto deadbolt

Tubular



Interconnected

Other Solutions for Commercial Applications

Onity is a leading global provider of real solutions and reliable support to a wide variety of markets throughout the world, which includes hotels and resorts, college and university campuses, military bases, government and corporate office buildings, healthcare facilities and cruise ships.

We continue our dedication worldwide by responding to the various markets' increasing demand for multiple solutions from a single source with superior service and support. For over 20 years, we have grown from an electronic lock company, to a worldwide provider of control systems and services.

In addition to electronic locks, Onity has a wide range of additional solutions available offering multiple application opportunities for Commercial markets:



Electronic Cylinders

Please go to page 16



Bathroom and Passage Locks

Please go to page 17



Electronic Locks for Lockers

Please go to page 17



Electronic Safes

Please go to page 20



Minibars

Please go to page 22



Energy Management

Please go to page 24

Customer Base

The strength of the Onity brand is the result of the products and services we provide and the reputation we build every day by listening and meeting the needs of our clients. The following are some of the properties where the millions of existing Onity locks have been installed:

Europe

Andorra

- Piolets Park, Soldeu

Austria

- Innsbruck Hotel, Innsbruck
- Motel One, Wien
- Trofana Royal, Ischgl

Azerbaijan

- Hilton, Baku

Belarus

- Princess Hotel, Minsk

Belgium

- Golden Tulip, Brussels
- Marriott, Brussels
- Radisson Blu Royal, Brussels

Bosnia and Herzegovina

- Izmit Hotel, Sarajevo

Bulgaria

- Novotel, Plovdiv

Croatia

- Falkensteiner Hotel & Residence
Punta Skala, Petřčane
- Hilton Imperial, Dubrovnik
- Regent Esplanade, Zagreb

Cyprus

- Hilton Park, Nicosia

Czech Republic

- Corinthia, Prague
- Hilton, Prague

Denmark

- Marriott, Copenhagen

Estonia

- L'Ermitage, Tallin

Finland

- M/S Kristina Katarina, Kotka
- Scandic Hotel, Vierumäki
- Sunborn Yacht & Yacht 3, Naantali

France

- Golden Tulip Millénaire, Lyon
- Le Collectionneur Arc de Triomphe, Paris
- Queen Mary 2, Saint-Nazaire
- Relais Spa Roissy, Paris

Georgia

- Gudauri Ski Resort, Gudauri

Germany

- Arabella Sheraton Fürstenhof, Leipzig
- Mercure, Hamburg
- Motel One, Frankfurt

Greece

- Atlantica Imperial, Rhodes
- Novotel, Athens
- Sofitel Airport, Athens

Greenland

- Hans Egede, Nuuk

Hungary

- Hilton, Budapest
- Le Meridien, Budapest
- Sofitel, Budapest

Ireland

- The K Club, Straffan
- Dublin City University, Dublin
- Waterford Institute of Technology, Waterford

Italy

- Bulgari Hotel Milan, Milano
- B4, Milano
- Hotel delle Nazioni Exedra, Bari

Kazakhstan

- Holiday Inn, Almaty

Latvia

- Domina Plaza, Riga

Lithuania

- Best Western, Santakos

Luxembourg

- Suite Novotel, Luxembourg

Malta

- InterContinental Malta, St. Julian's

Netherlands

- Crowne Plaza, Hoofddorp
- Hilton Schiphol Airport, Amsterdam
- NH, Koningshof

Norway

- Clarion Collection, Gabelshus
- First Hotel Atlantica, Aalesund
- Radisson Blu Airport Gardermoen, Oslo

Poland

- Hilton, Gdansk
- Holiday Inn Express, Warsaw

Portugal

- Four Seasons Ritz, Lisbon

Romania

- Best Western Ambassador, Timisoara

Russian Federation

- Grand Hotel Europe, Saint Petersburg
- Holiday Inn Sokolniki, Moscow
- National Hotel, Moscow

Slovenia

- Grand Hotel Metropol, Portoroz

Spain

- Barceló Punta Umbría, Huelva
- Catalonia Plaza de España, Barcelona
- Diversey Lever, Barcelona
- Expo Torre Cataluña, Barcelona
- Hospital La Paz, Madrid
- Rota Naval Station, Cádiz
- Universidad Politécnica de Cataluña, Barcelona

Sweden

- Choice Nordic, Stockholm
- Elite Marina Towers, Stockholm
- Radisson BLU Royal Viking, Stockholm

Switzerland

- Concorde Hotel de la Paix, Geneva
- Sofitel, Zurich

Turkey

- Gloria Hotel Belek, Antalya
- Lykia World, Fethiye
- Rixos, Antalya

Ukraine

- Radisson Blu, Kiev
- Ramada Encore, Kiev

United Kingdom

- Jureys Inn, Birmingham
- Kensington Close Hotel & Spa, London
- ME by M&A International, London
- School of Economics, London
- Western Infirmary, Glasgow

Middle East

Bahrain

- Novotel Al Dana Resort, Manama

Egypt

- Hilton Resort, Hurghada
- Radisson Blu Alexwest, Alexandria
- Staybridge City Stars, Cairo

Israel

- David InterContinental, Tel Aviv
- Hilton Eilat Queen of Sheba Resort, Eilat

Jordan

- Sheraton, Amman

Kuwait

- Mövenpick Resort, Kuwait City

Lebanon

- Hotel Dauphine, Beirut

Oman

- Radisson Blu Al Khuwair, Muscat

Qatar

- Best Western Doha Seef, Doha
- Ramada Encore, Doha
- Wyndham Grand Regency, Doha

Saudi Arabia

- Al Marwa Rayhaan by Rotana, Makkah
- Hilton Garden Inn, Riyadh
- Mövenpick Anwar Al Madinah, Madinah

Syria

- Coral Martini Hotel, Aleppo

United Arab Emirates

- The Address Dubai Marina, Dubai
- Mövenpick Jumeirah Beach, Dubai
- Sofitel Jumeirah Beach, Dubai

Africa

Algeria

- Hana Tallasamosta, Mostaghanem
- New Dey Hotel, Argel

Congo, Democratic Republic

- Elais Hotel, Pointe Noire
- Leon Brazzaville, Brazzaville

Djibouti

- Djibouti Palace Kempinski, Djibouti

Equatorial Guinea

- Sofitel Malabo Sipopo Le Golf, Malabo

Ethiopia

- Novotel, Addis Ababa
- Ramada, Addis Ababa

Gabon

- Nomad Suites et Résidences, Libreville

Ghana

- Coconut Grove Elmina Beach, Elmina
- Palm Royal Beach, Accra

Kenya

- Crowne Plaza, Nairobi
- Dusit D2 Nairobi
- Kempinski, Nairobi

Madagascar

- Maria Toulouse Hotel, Antananarivo

Malawi

- Kalikutu Hotel, Lilongwe

Mauritius

- Le Prince Maurice, Poste de Flacq
- Lux Gran Gaube, Grand Gaube
- Royal Palm, Grand Baie

Morocco

- Hilton Garden Inn Tanger
- Ramada Tanger
- Sofitel Royal Golf, El Jadida

Over 250 hotel chains around the world rely on Onity solutions and they have the peace of mind of knowing that their customers and property will be safe, while enjoying the latest in comfort.



The product names, logos, brands, and other trademarks featured here are the property of their respective trademark holders. These trademark holders are not affiliated with UTC Climate, Controls & Security nor do they sponsor or endorse our UTC Climate, Controls & Security trademark.



Nigeria

- Lagos Oriental Hotel, Lagos

Senegal

- Lamantin Beach Hotel & Spa, Saly

Seychelles

- Lémuria Resort, Praslin
- Raffles Seychelles, Praslin

South Africa

- City Lodge Sandton, Johannesburg
- Holiday Inn Express Umhlanga
- The Palace, Sun City

Tanzania

- Golden Tulip, Dar es Salaam
- Holiday Inn, Dar es Salaam

Tunisia

- Iberostar Averroes, Hammamet
- Robinson Club Djerba Bahiya, Djerba
- Vincci El Kantawui Center, Sousse

Uganda

- Africana Hotel, Kampala

Zanzibar

- Safari Resort, Zanzibar

North America

USA

- Best Western Deerfield Inn, Springfield
- Carlton House, New York
- Hilton Grand Vacations, Orlando
- Hilton Paris, Las Vegas
- Holiday Inn Northeast, Kansas City
- Hyatt Regency Pier 66, Florida
- Marriott Marquis, New York
- Peabody, Orlando
- Price Waterhouse Training Center, Tampa
- Sheraton West, Palm Beach
- UCLA, Los Angeles
- Waldorf Astoria, New York
- West Virginia University Hospital, Morgantown
- Westin, Las Vegas
- White Elephant Resort, Nantucket

Canada

- Charlton Chateau, Jasper
- Ramada Plaza, Hull
- Royal Canadian Lodge, Banff

Latin America

Argentina

- Hilton, Tucuman
- Hyatt Mendoza, Buenos Aires
- Marriott Plaza, Buenos Aires
- Sheraton, Mar de Plata

Bolivia

- Europa, La Paz

Brazil

- Clarion, Brasilia
- Hotel Soft, Parana
- Inter-Continental, Sao Paulo
- Meliá, Sao Paulo

Chile

- Holiday Inn, Concepción
- Termas de Chillán, Chillán

Colombia

- Santa Clara, Cartagena de Indias

Costa Rica

- Meliá Playa Conchal, Guanacaste

Dominican Republic

- Barceló Bávaro, Punta Cana
- Gran Palladium, Punta Cana
- Paradisus, Punta Cana

Guatemala

- Radisson Antigua, La Antigua

Mexico

- B2B, Cancún
- Courtyard By Marriott, Toluca
- Fiesta Americana Condesa, Cancún
- Hilton Mexico City, Cd. de Mexico

Peru

- Los Delfines, Lima

Venezuela

- Gran Meliá, Caracas

Asia Pacific

Australia

- Duxton Hotel, Perth
- Hyatt Regency, Coolom
- Pullman Reef Casino, Cairns

China

- Crowne Plaza Hotel, Lijiang
- Howard Johnson, Kunming
- Intercontinental, Nanjing

India

- Hilton Mayur Vihar, Delhi
- Movenpic, Bangalore
- Novotel Juhu, Mumbai

Indonesia

- Hard Rock Hotel, Bali
- Hotel Mulia, Jakarta
- St Regis Hotel, Bali

Japan

- Hilton, Tokyo

Korea

- Cheju Shilla, Cheju
- Grand Hilton, Seoul

Malaysia

- Ritz Carlton, Kuala Lumpur

Maldives

- Hilton, Irufushi
- Moofushi Resort, South Ari Atoll
- W' Retreat & Spa, North Ari Atoll

New Zealand

- Novotel, Hamilton
- Sofitel Hotel & Spa, Queenstown

Pakistan

- Pearl Continental, Karachi

Singapore

- Traders Hotel by Shangri-La, Singapore

Thailand

- Aloft, Bangkok
- JW Marriott, Bangkok
- Novotel Ruamrudee, Bangkok

Vietnam

- Crowne Plaza Hotel, Hanoi





Worldwide Headquarters

Salem OR, USA
Tel.: +1 503 581 9101
+1 866 86 Onity
moreinfo@onity.com

Europe / Middle East / Africa

Tel.: +34 943 448 300
EMEA@onity.com

Asia / Pacific

Tel.: +61 2 9581 65555
ASPAC@onity.com

Latin America

Tel.: +52 55 5250 1557
+55 11 3670 2555
+54 11 4814 1717
mexico@onity.com
LAM@onity.com
argentina@onity.com

The Onity User

Onity solutions are designed to offer higher security and comfort for the user, as well as to optimise the daily management of the property.

The company's ever-expanding family of technological solutions today includes on-line and off-line electronic locks, electronic in-room safes, energy management systems, and minibars.

The Onity Market

Onity, the leading global provider of electronic locking systems, offers innovative technological solutions and services for the Hospitality industry, as well as Corporate, Education, Government and Marine markets.

The Onity World

With decades of industry experience, Onity offers guaranteed quality and service. Onity has agreements with more than 250 hotel chains around the world. Thanks to an extensive network that spans more than 115 countries, Onity locks can be found in over 5 million rooms of more than 30,000 hotels worldwide, as well as in hospitals, universities, corporate buildings etc.

